





Tasmanian Expedition
13 Nights / 14 Days
Fully Escorted
22 February – 7 March 2022

ITINERARY HIGHLIGHTS:

- Hobart
- Port Arthur
- Huon Valley
- Salamanca Markets
- Bruny Island
- Recherche Bay
- New Harbour
- Maatsuyker Island Group
- Freycinet Peninsula
- Kent Island Group
- Flinders Island
- Maria Island
- Cape Pillar
- And so much more

INCLUDES:

- **Private single category Balcony C Stateroom (upgrade available)**
- **Private single rooms** in quality accommodation
- **Meals** as per itinerary - 12 Breakfasts, 8 Lunches, 11 Dinners
- **Beer & House Wine** included with dinner on board ship
- **Sightseeing** tours and transfers by private vehicle as per itinerary
- **Solo Connections Tour Host & Local English Speaking Guides**
- **All shore excursions** and **Zodiac cruises** mentioned in the itinerary
- **Educational lectures** and **guiding services** from expedition team on board ship
- Access to **onboard doctor** and basic medical services on Greg Mortimer
- **Expedition Spray Jacket**
- **Port Surcharges** – Landing Fees & Permits
- **Onboard Cruise Tipping/Gratuities** for Greg Mortimer crew

EXCLUDES:

- Flights to and from Hobart (starting point of the tour)
- Optional Activities such as Kayaking, Scuba Diving & Rock Climbing
- Any meals, tours, shore excursions or transfers other than mentioned above
- Travel Insurance and all other items of a personal nature i.e. laundry, drinks, phone calls, etc

From \$18,413* pp Balcony C Stateroom or \$19,129* pp Balcony B Stateroom

Terms and Conditions apply. Price is per person Sole Use and subject to availability. Price is correct as at 28 May 2021. **Bookings must be deposited by 30 June 2021.** Tour requires minimum number of passengers to depart. Solo Connections is constantly striving to improve our itineraries and inclusions. If unforeseen circumstances beyond our control make changes necessary, we reserve the right at any time to vary itineraries and to substitute inclusions of equal value. Beverages, additional meals, hotel mini bars, laundry, phone calls, any items of personal nature not included. Further booking conditions apply, please check all prices, availability and other information with your travel agent at time of or before booking. Package cancellation fees apply. Denise Marie Falsay trading as Solo Connections. ATAS Accredited A11424. ABN 92 582 582 99



Day 1 – Tuesday 22 February 2022
Arrive Hobart

D

Today we meet at Hobart Airport. **Your tour host will be arriving on a flight at 1:40pm with passengers from Brisbane. When booking flights please book for a similar arrival time.**

Upon arrival we will be greeted by our friendly coach captain, board our coach and travel to our hotel. Today we will also meet fellow travellers on from our Tasmanian Highlights tour.

A **Welcome Dinner** will be take place this evening within the hotel.

Accommodation: Vibe Hotel or similar (4 nights)

Day 2 – Wednesday 23 February 2022
Port Arthur

B-D

This morning after breakfast we will travel via **Sorell Causeway** and **Midway Point** for our full day tour to Tasman Peninsula. Take in magnificent views from the look-out above picturesque **Eaglehawk Neck** and **Pirates Bay** before continuing to the **Port Arthur Convict Settlement**.

Within the 40 hectares of landscaped grounds lies a rich history of Australia's convict past. Included in the entry is a guided walking tour, a short harbour cruise, access to the Visitor Centre and Interpretation Gallery as well as more than 30 buildings, ruins, restored gardens and houses; explore as you wish before departing the historic site to tour beside **Norfolk** and **Frederick Henry Bays** back to Hobart.

Day 3 – Thursday 24 February 2022
Huon Valley

B-L

This morning we travel through the southern suburbs of Hobart passing the iconic shot tower, which is one of Tasmania's most historical industrial buildings.

Stretch your legs at the **"Margate Train"** then continue along the Derwent River which broadens into the **D'Entrecasteaux Channel**, once a haven for sealers and whalers, now one of Hobart's aquatic playgrounds.

Stop at **Crawleigh Wood Garden**, a wonderful 2 hectare garden nestled in the picturesque hills of Cygnet. The garden features lush woodland and rainforest with an eclectic variety of plants.

Explore the shops of **Cygnet** before we return to Hobart via **Mt Nelson**. Take in the panoramic views of the city and estuary before returning to the hotel.

Dinner tonight is free choice at one of the many nearby restaurants (own expense).



Day 4 – Friday 25 February 2022
Hobart – Day at Leisure

B-D

Enjoy breakfast at leisure before having the remainder of the day free to relax and visit some of Hobart's wonderful attractions at your own pace.

Your tour host will give the group some ideas of what options are available.

We will come together this evening for dinner, saying farewell to those that will be returning home tomorrow.

Day 5 – Saturday 26 February 2022
Salamanca Markets / Board Greg Mortimer

B-D

A leisurely breakfast this morning before we check out and have some time at leisure. As it is Saturday, take the opportunity to explore the famous **Salamanca open-air Markets** with its bustle and buskers, colour and excitement. Your Tour Host will be on hand to ensure the group is looked after and anyone wanting to join in some final exploring can do so.

Later we'll be transferred to the Hobart marina and be welcomed aboard the **Greg Mortimer**. We will be shown our cabins before mandatory safety drills are carried out. Enjoy a **welcome drink** and meet fellow expeditioners at the voyage briefing this evening. Leaving Hobart, we sail past the impressive cliffs of **Cape Pillar** and Tasman Island's dramatic dolerite columns rising from the sea.

This 104-metre ship is Aurora Expeditions very first, purpose-built expedition vessel. Built to world-class polar standards and designed in close consultation with Aurora's expedition specialists the ship was named after the co-founder of Aurora Expeditions and utilises some of the latest advancements in naval design and technology to revolutionise the small ship expedition cruising experience.

The X-Bow® hull makes sailing smoother and faster, and the new virtual anchoring system uses GPS and high-tech steering to hold the ship's position so that sea floor is protected. Shore excursions are also made easier with four sea-level Zodiac-loading platforms and an activity preparation area, plus an observation lounge and viewing platforms offer spectacular panoramic views of scenery and wildlife. Also on board is a state-of-the-art lecture theatre, two Jacuzzis/plunge pools, a multi-media room and library, gym, wellness centre and more!

Please refer to this itinerary for our expedition cruise as a guide only, as changes may occur due to unpredictable sea and weather conditions. Flexibility is key, and we will take each day as it comes and enjoy what is on offer.

On this trip we will explore the untamed beauty of Tasmania's southern and eastern coasts. Cruise the dramatic dolerite archways and caverns of the Tasman Peninsula, discover the spectacular scenery of South Bruny Island, and explore historic Recherche Bay. Round South East Cape to delight in remote New Harbour, and spy the southernmost lighthouse in Australia at the Maatsuyker Island. Stroll along the dazzling white sands of the Freycinet Peninsula and experience the granitic beauty of Flinders Islands' Strzelecki Peaks. Discover the rich natural and human history of the far-flung Kent Island Group. Meander through the tall eucalypt forests of Maria Island, marvel at 'painted' cliffs, or seek out some of the wildlife that calls it home – from Bennett's wallabies and wombats, to potoroos, pademelons and penguins. Enjoy the raucousness of an Australian fur seal colony's rocky haul-out and Cape Barren geese, and witness the magnificent sight of a soaring albatross in the skies above you. Each day offers a sensory smorgasbord that will forge lasting memories of your southern adventures.

Accommodation: Greg Mortimer Expedition Ship (9 nights)

- Tasmanian Expedition -



Day 6 – Sunday 27 February 2022
Bruny Island & Recherche Bay

B-L-D

From the comfort of our floating base camp, make your first forays to the picturesque Cloudy Bay at South Bruny Island. Enjoy picturesque coastal walks through flowering heathlands and eucalypt forests, a more leisurely stroll on long stretches of pristine sand, or a more active tramp up the headland for sweeping views of Cloudy Bay and beyond to the Southern Ranges. Keep an eye out to our starboard for views of Cape Bruny's historic lighthouse as we sail towards the extreme south-eastern corner of Tasmania, and the staging post for our afternoon's adventures.

The idyll of Recherche Bay offered French explorer, Bruni D'Entrecasteaux, refuge, replenishment, and scientific discovery. Learn more about his exploits, including the well-documented, amicable encounters and mutual observation between the expedition members and the indigenous Lylequonny people. Enjoy a hike towards the extreme southern tip of Tasmania or towards Fishers Point past the impressive bronze whale sculpture that commemorates the area's early whaling history.

Day 7 – Monday 28 February 2022
New Harbour & Maatsuyker Island Group

B-L-D

Having rounded South East Cape, experience untamed wilderness of Southwest National Park from the shores of New Harbour with various walking and Zodiac-cruising options. Perhaps explore a short section of the famed South Coast track, or simply revel in the isolation and wildness of this remote and windswept shores.

From the comfort of the 'mother ship', enjoy a ship cruise at the Maatsuyker Island Group. Spy Australia's most southerly lighthouse at Maatsuyker Island, and delight in the majesty of soaring shy albatross in the skies above Mewstone Island before returning northwards.

Day 8 – Tuesday 1 March 2022
Freycinet Peninsula

B-L-D

The striking scenery of **Freycinet Peninsula** tempts you for another day of discovery, whether you hike its towering pink granite peaks for a spectacular view, paddle its iridescent-blue waters, or stroll along a pristine white beach peppered with orange lichen-covered boulders. The surrounding wilderness is also alive with flora and fauna.

On your adventures, keep an eye out for white-breasted sea eagles soaring in the skies above, Bennett's wallabies lazing under a she-oak, the local pod of bottle-nose dolphins, or perhaps one of the short-beaked echidnas that are sometimes seen foraging for ants in daylight hours. Weather permitting, we may also visit the nearby Schouten Island group, where gangs of fur seals can be seen vying for their favourite rocky resting place.



Day 9 – Wednesday 2 March 2022
Northwestern Flinders Island

B-L-D

Flinders Island – called Great Island until it was renamed in the early 1800s after explorer Matthew Flinders – is the largest of Tasmania's islands and home to Strzelecki National Park. The island offers sapphire waters, untouched beaches, a rich variety of flora and fauna, rocky ridges and towering peaks as a backdrop to your hiking, paddling or underwater adventures.

Day 10 & 11 – Thursday 3 & Friday 4 March 2022
Kent Island Group

B-L-D

Marvel at the mystique of the far-flung **Kent Islands** – often missed on conventional maps – and experience its rich natural and human history. This cluster of three main islands and four smaller islets comprise Tassie's northernmost national park.

Discover the bountiful, nutrient-rich waters created by the convergence of three major ocean currents, which help feed Australia's largest fur seal colony. Scan the shorelines and skies for sooty oystercatchers, short-tailed shearwaters, petrels and prions; contemplate the looming granite lighthouse; and discover stories of sealers, sailors and shipwrecks in the original lightkeeper's cottage (the oldest in Australia, and now museum) run by the islands' only two inhabitants.

Day 12 – Saturday 5 March 2022
Lady Barron, Flinders Island

B-L-D

The southern shores of Flinders Island offer a range of activities.

Energetic hikers may like to set off to scale the granitic beauties of the Strzelecki Peaks to experience spectacular vistas, while others might enjoy a shorter meander along the shaded foreshore of **Lady Barron**, or a moderate leg-stretch to the secluded beaches on the Trouser Point Walk.

The crystal-clear waters and islands within **Petrifaction Bay** may also tempt you to take to the sea, whether it be a Zodiac-cruise, paddle or snorkel.

Day 13 – Sunday 6 March 2022
Maria Island

B-L-D

Known as Tasmania's 'Noah's Ark', **Maria Island** is home to an abundance of native wildlife including Bennett's wallabies, common wombats, and rufous-bellied pademelons; as well as conservation sanctuary to a number of introduced species including the Tasmanian devil.

The island is also considered one of the best places for bird watching, with a variety that includes all but one of Tassie's endemic bird species. In addition to its natural history, the island has a rich human history stretching back over 40,000 years. The Puthikwilayti people of the Oyster Bay tribe were original custodians of the land and surrounding waters, which was later visited by European explorers, and exploited by sealers and whalers.



Convict settlements, failed commercial ventures, and an eventual National Park designation are also part of the island's antiquities. Whether you choose to explore its secluded bays and beaches, snorkel its clear waters, delight in its wildlife, or stretch your legs on a range of hiking options – through tall eucalypt forests, along exquisite coastlines, or upwards to take in the island's stunning landscapes from its peaks - Maria Island has something special for everyone.

Back on board and as we set sail for Hobart, toast your adventures and celebrate with friends – both new and old – at our **Captain's Farewell Dinner**.

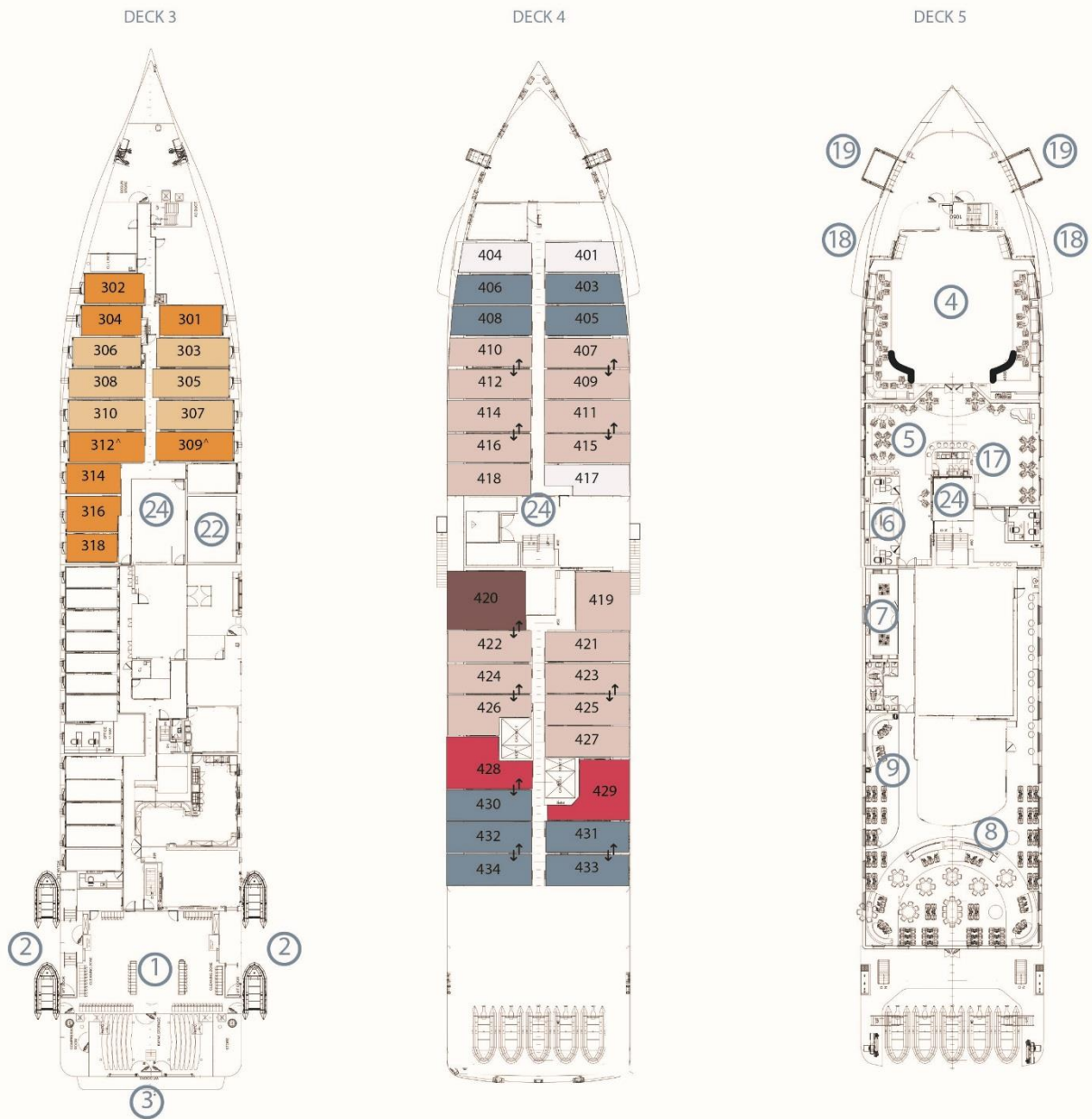
Day 14 – Monday 7 March 2022
Hobart - Home

B

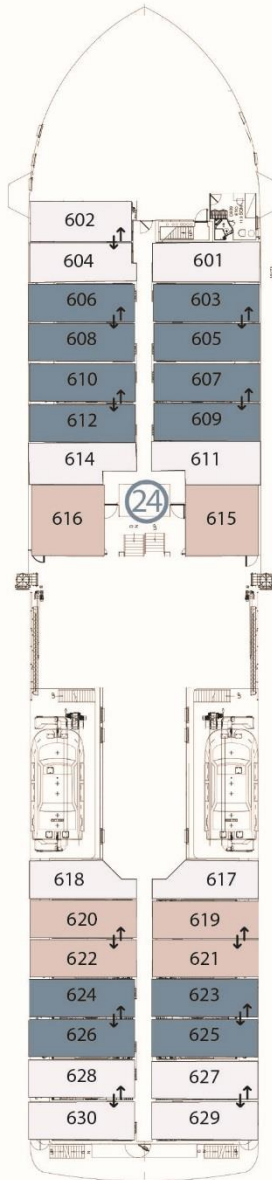
Docked back in Hobart, we'll have breakfast and then farewell the crew, expedition team and fellow travellers before our transfer to the airport in time for our flights home.

**Keep scrolling down for Greg Mortimer deck plan & key*

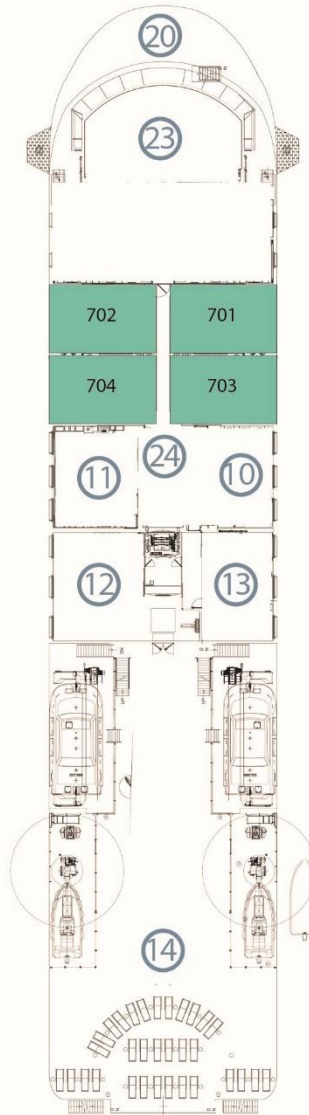
Deck plan – Greg Mortimer



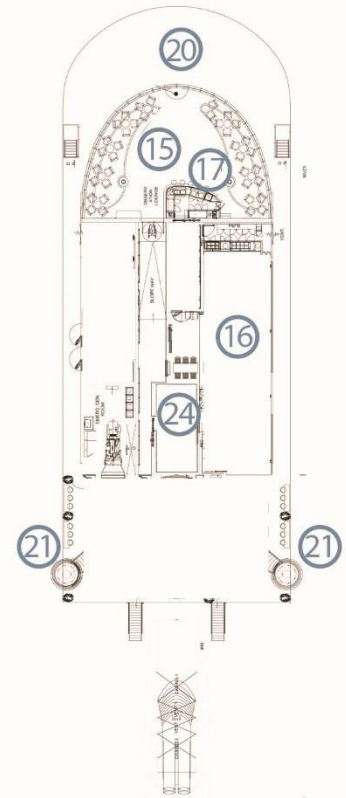
DECK 6



DECK 7



DECK 8





Cabin Category

- Aurora Stateroom Triple Share*
- Aurora Stateroom Twin Share
- Balcony Stateroom - A
- Balcony Stateroom - B
- Balcony Stateroom - C

- Balcony Suite
- Junior Suite
- Captain's Suite

Ship Features

- ① Change room/mudroom
- ② Zodiac-loading platforms
- ③ Activity launching platform
- ④ Lounge/lecture theatre
- ⑤ Assembly station
- ⑥ Reception
- ⑦ Ship shop
- ⑧ Dining room
- ⑨ Optional private dining area[#]

- ⑩ Expedition team office
- ⑪ Library and multi-media room
- ⑫ Gym
- ⑬ Sauna/wellness centre
- ⑭ Sun deck
- ⑮ Observation lounge
- ⑯ Top deck
- ⑰ Bars
- ⑱ Viewing platforms

- ⑲ Hydraulic viewing platforms
- ⑳ Observation deck
- ㉑ Jacuzzis/plunge pools
- ㉒ Medical clinic
- ㉓ Bridge
- ㉔ Elevator



Connecting staterooms and suites

[^] Expedition Team cabins on selected voyages

^{*} Triple cabins on selected voyages

[#] Open at the discretion of the Hotel Manager on selected voyages

Deck plan is subject to change.